

LINO NM 1/26
TINTO REATTIVO O INDANTHRENE
TINTO DELAVÉ WS



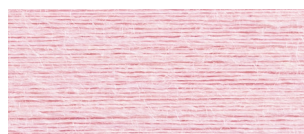
TOT SRL
stock service filati



3313 BIANCO REAT



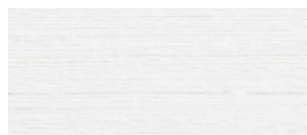
TIRRENO IND



3362 BABY REAT



GHIACCIO IND



GREGGIO



GARDA IND



3319 ROSE REAT



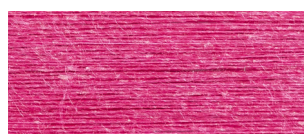
OXIGEN IND



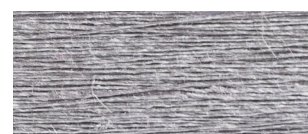
OLMO IND



3305 CIELO REAT



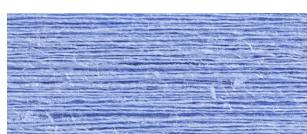
3326 FUXIA REAT



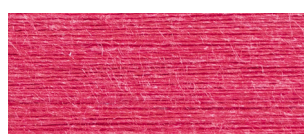
3335 GRIGIO REAT



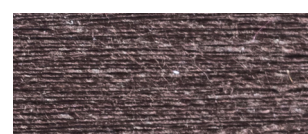
3327 BEIGE REAT



PACIFIC IND



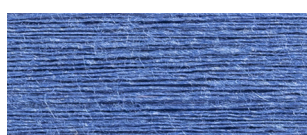
3340 RED REAT



3372 PALISSANDRO REAT



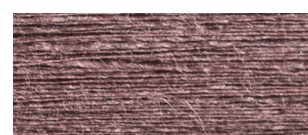
9997 MURO REAT



3333 NOTTE REAT



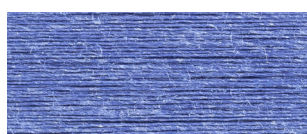
3325 POMPEI REAT



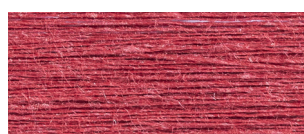
9999 CASTANO REAT



CEDRO IND



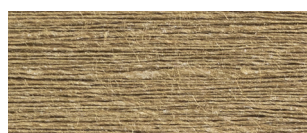
COMO REAT



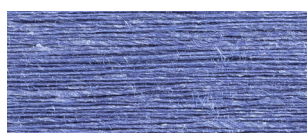
3308 MATTONE REAT



3309 TABACCO REAT



3317 PALUDE REAT



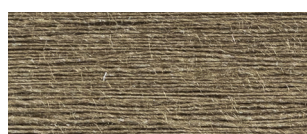
3345 GENDARME REAT



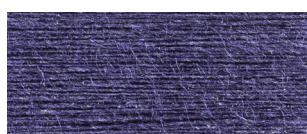
MELOGRANO REAT



3373 ORZO REAT



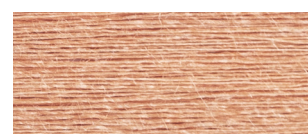
3347 VERDE M. REAT



PURPLE REAT



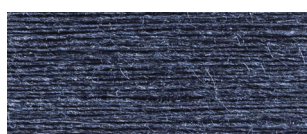
3339 EMINENZA REAT



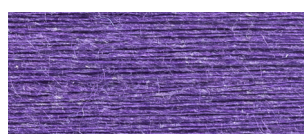
ALBICOCCA IND



3348 SABBIA REAT



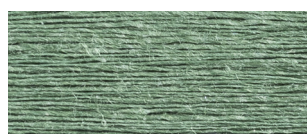
3371 BUIO REAT



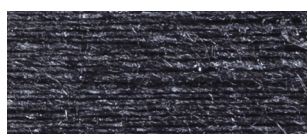
3329 VIOLA REAT



AURORA IND



3346 RESEDA REAT



3312 NERO REAT



3361 LILLA REAT



3301 PAGLIA REAT



3370 ARANCIO REAT



3310 TURCHESE REAT



ACERO WS



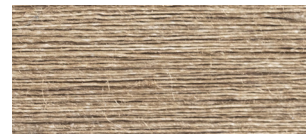
RENA WS



ANAS REAT



ZABAIONE WS



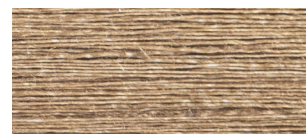
DUNA WS



3343 SOLE REAT



MOSTARDA WS



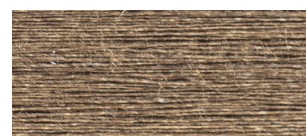
TEK WS



CANARESCA IND



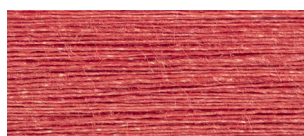
BRULÉ WS



TERRA WS



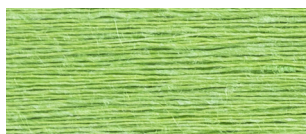
3360 ACIDO REAT



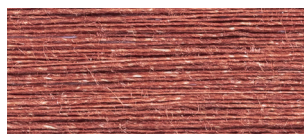
ARANCIATA WS



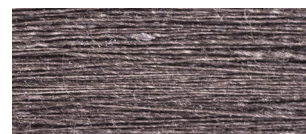
NOCE WS



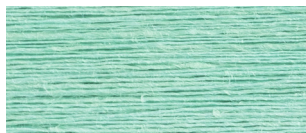
NEON REAT



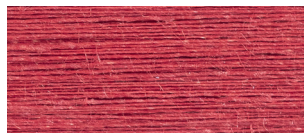
NUTELLA WS



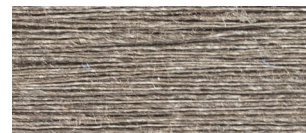
CARBONE WS



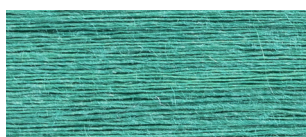
FRESCO IND



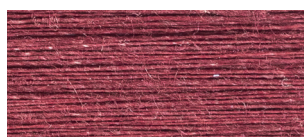
BITTER WS



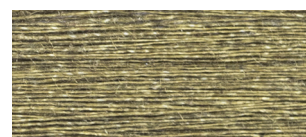
SALICE WS



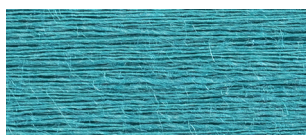
3307 SMERALDO REAT



LAMBRUSCO WS



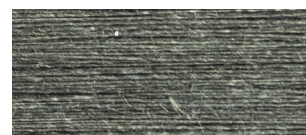
ALLORO WS



TURCHESE REAT



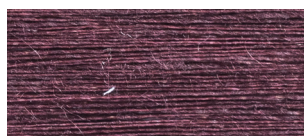
MOGANO WS



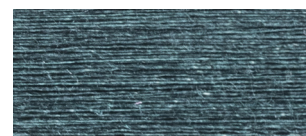
PINO WS



3350 MARE REAT



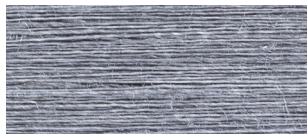
BAROLO WS



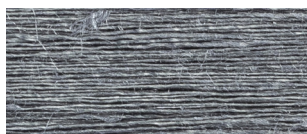
CIPRESSO WS



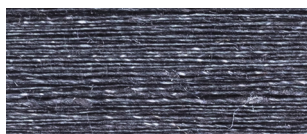
TRATTATO



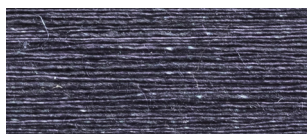
GHISA WS



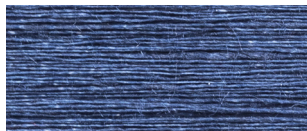
PIOMBO WS



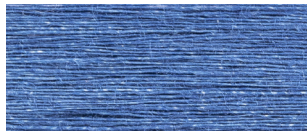
NERONE WS



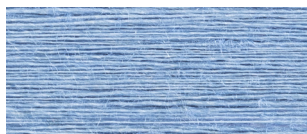
BURRASCA WS



MARE WS



LARIO WS



FIUME WS

LINO Linen

Tinto con coloranti reattivi o indanthrene
Dyed whit reactive dyestuff or indanthrene

Solidità minime garantite:
Lowest fastness granted:

	LUCE <i>light</i>	LAVAGGIO A SECCO <i>dry cleaning</i>	LAVAGGIO A 60° <i>washing at 60°</i>
COLORI CHIARI <i>light colours</i>	3/4	4/5	4/5
COLORI MEDI <i>medium colours</i>	4	4/5	4
COLORI SCURI <i>dark colours</i>	4/5	4	4

I valori riportati si riferiscono al cambiamento di tono.
The a.m. values are referred to the change of the colour's tone.

Gli stingimenti sulle fibre accompagnatorie vanno valutati di volta in volta in funzione delle condizioni di lavorazione e al tipo di fibra ma comunque non sono inferiori al valore 3/4.

The fading on the accompanying fibres must be valuated every time according to the working conditions and to the kind of fibre, but anyhow it will not be less than value 3/4.

Per qualsiasi altra esigenza di tipo tecnico si consiglia di informarsi preventivamente.

For any other technical requirement please ask information in advance.

LINO TINTO DELAVÉ SOLIDO Linen delavé fixed

Tinto con coloranti reattivi o indanthrene.
La fibra presenta la particolarità di essere tinta solo in superficie; un semplice trattamento meccanico eseguito sul tessuto o sul capo confezionato conferisce un aspetto "invecchiato".

Dyed whit reactive dyestuff or indanthrene.
The fibre shows the characteristic to be only dyed on the surface; a simple mechanical treatment made on the cloth or on the ready made article gives a "old looking" look.

Solidità minime garantite:
Lowest fastness granted:

	LUCE <i>light</i>	LAVAGGIO A SECCO <i>dry cleaning</i>	LAVAGGIO A 60° <i>washing at 60°</i>
COLORI CHIARI <i>light colours</i>	3/4	4	4/5
COLORI MEDI <i>medium colours</i>	4	4	4
COLORI SCURI <i>dark colours</i>	4	4	4

I valori riportati si riferiscono al cambiamento di tono.
The a.m. values are referred to the change of the colour's tone.

Gli stingimenti sulle fibre accompagnatorie vanno valutati di volta in volta in funzione delle condizioni di lavorazione e al tipo di fibra ma comunque non sono inferiori al valore 3/4.

The fading on the accompanying fibres must be valuated every time according to the working conditions and to the kind of fibre, but anyhow it will not be less than value 3/4.

Per qualsiasi altra esigenza di tipo tecnico si consiglia di informarsi preventivamente.

For any other technical requirement please ask information in advance.